

STEP

1

Install the Device

- 1 Before installing this wireless network adapter, make sure the computer is turned off. Remove the expansion slot cover from the computer.
- 2 Carefully install the Wireless LAN PCI Card into the PCI slot. Push evenly and slowly and ensure it is properly seated. You may have to use the mounting screw to have the card screwed securely in place.
- 3 Now, turn on your computer and prepared to perform the **Driver & Utility** Installation to activate this Wireless PCI Card.

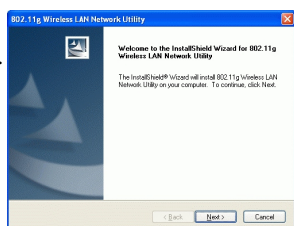
STEP

2

Install Driver & Utility

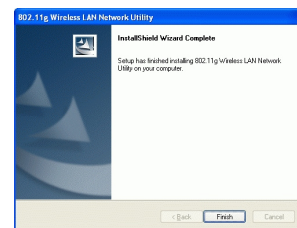
Note: The Hardware Wizard will detect your Wireless PCI Adapter once the hardware installation is completed, click **Cancel** to exit the Hardware Wizard screen and start installing the Driver & Utility.

- 1 Exit all Windows programs. Insert the CD-ROM into the CD-ROM drive of your computer. If the CD-ROM is not launched automatically, go to your CD-ROM drive (e.g. drive D) and double-click the **Setup.exe**
- 2 The main screen of the CD-ROM opens. Select **Install Driver & Utility** to start the installation.
- 3 When the Welcome screen appears, click **Next** to continue.



4

Click **Finish** to complete the software installation.



STEP

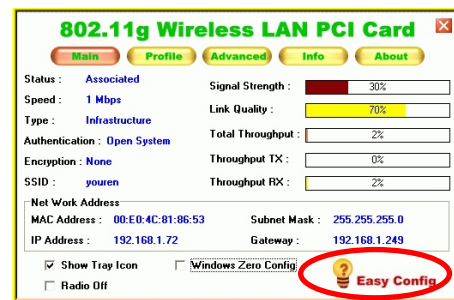
3

Utility Configuration

All the settings can be categorized into 5 Tabs:

Main Tab
Profile Tab
Advanced Tab
Info Tab
About Tab

You may choose to use the Easy config, the system will guide you to configure some basic settings. In the **Main** Tab, click **Easy Config** on the right down corner to start quick configuration.



Main Tab, **Profile** Tab, and **Advanced** Tab provide you to do the detailed configuration, for detailed configuration, please refer to the User 's Manual.

Info Tab and **About** Tab provide you information about this Wireless PCI Adapter.

Info Tab

The **Info** Tab displays information maintained by the driver, such as the number of packet errors and the total number of bytes received or transmitted. The tab also displays information about the current connection, as well as network information about the station. The statistics are for the period starting when you last connected to a network. The statistics are refreshed at least twice a second.

About Tab

Click the **About** Tab to view basic version information, including the OS Version, Firmware Version and EEPROM Version.